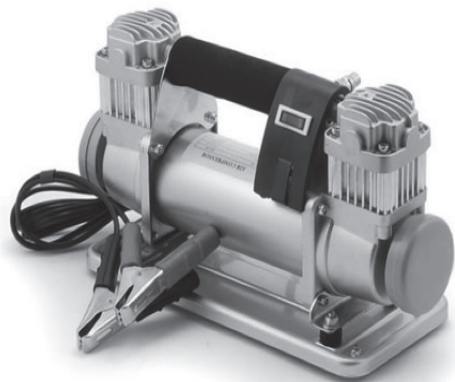


High speed Dual Cylinder

AIR COMPRESSOR



BROUTECH

Broutech High speed Dual Cylinder Air Compressor

Read This instruction carefully to avoid possible injury or property damage

Important Safety Instruction:

Caution: To reduce risk of electrical shock or electrocution, please follow as below:

- Do not disassemble. Do not attempt to repair or do any medications.
- Do not use this product in an area where it can fall or be pulled into water or other liquids.
- Do not reach for this product if it has fallen into water
- Use this air compressor with 12 Volt DC power only
- This product should never be left unattended during use

Warning: To prevent injuries:

- Extreme high temperature!! The unit will become hot during and immediately after use. Do not touch the unit with bare hand other than the on/off switch and its handle.
- This air compressor should only be handle and operate by an adult, avoid any children to go near it. Close supervision is necessary when this air compressor is being used.

- Do not use this product near flames or explosive atmospheres where aerosol product is being used.
- Do not operate this product where oxygen is being administered
- Do not pump anything other than atmospheric air.
- Never use this product while sleepy or drowsy.
- Do not use any tools or attachments without first determine maximum air pressure for that tool or attachment.
- Never point any air nozzle or air sprayer towards another person or any part of the body.
- Wear safety glass or goggles when operating this product
- Use only in well ventilated area.
- Make sure air compressor site upright while operating the air compressor. Do not operate it if air compressor is not sitting up.
- Avoid tugging at air compressor, move air compressor to the same side of vehicle as tires that are being aired up.
- Always make sure air compressor's power cord is uncoiled and fully extended when using the air compressor to avoid overheating of the power cord.

Product Specification:

- Air pressure: DC 12V 150PSI
- Cylinder diameter: 2 x 40mm
- Air hose: 5m PU hose+25cm rubber hose with pressure gauge
- Max voltage: 14.8 Volt; Max amperage: 50A

- Super High volume output 90L/Min or 3.2 CFM Free flow @0 PSI
- Max duty cycle: 60 minutes
- Product size: 13.5" X 5.5" X 7.5"
Accessories: 2 nozzle adapters and 1 sports needle
- Power cord: 8 ft , Air hose: 17ft

Operating instruction:

Please read and follow the operating instruction carefully to assure that you will enjoy the convenience and best use out of your air compressor

Important:

1. Always operate the air compressor within the maximum pressure rating of the air compressor. Refer to specifications section of this manual
2. Always observe the maximum duty cycle of the air compressor. Refer to the specifications section of this manual for details. Operations exceeding maximum pressure rating or duty cycle will result in damage to air compressor.

In Line pressure gauge:

1. The 2 inch in-line pressure gauge provide convenient tire pressure monitoring when airing up. This eliminates switching back and forth between tire chuck and tire pressure gauge.
2. Please note that during inflation and deflation, due to air velocity, pressure gauge cannot provide an accurate reading. Momentarily halt inflation to obtain accurate pressure reading.

3. This air compressor comes with heavy duty heat resistant leader hose with quick connects stud. Simply attach the extension coil to the leader hose and you are ready to inflate tires.

- a. Attach quick connect coupler to air compressor
- b. Screw tire chuck onto tire valve stem
- c. Turn air compressor switch on to begin inflation, when desired pressure is reached, turn off the air compressor.

Safety precautions:

1. Always inflate tires to manufacture's recommended tire pressure.
2. Use heat-resistant, minimum **200 PSI** rated working pressure extension hose, never use aftermarket hose with less than 200 psi working pressure rating. Some aftermarket hoses may not be suitable for use with this air compressor due to heat and pressure typically generated by this type of high-speed air compressor.
3. Use of a close-ended tire chuck will cause excessive pressure build up if tire chuck is not attached to tire valve stem while air compressor is in operation. Always use an open-ended tire chuck such as the tire chuck equipped on the deflator/inflator coil hose for the tire inflation.

Caution: Never touch the air compressor or fitting connected to the air compressor other than the On/Off Switch with bare hands during or immediately after usage. Leader hose and fittings on hose will become very hot during and after use, if

necessary wear heat resistant gloves to extension hose from leader hose.

Auto shut-off (overheat)

Should at anytime during usage, the air compressor is automatically shut off, do not attempt to restart air compressor. Turn on/off switch of the air compressor to the off position. The air compressor will allow you to turn it on once its internal temperature drop below to a safe operating level. (Usually between 10-15mins depends on the ambient temperature).

Delay Start:

Please note that you may experience a slight delay (about ½ second) of the air compressor's motor starting when the on/off switch is turned on while air compressor is pressurized (when there is pressure in the line that the compressor is connected to). This is a normal delay reaction. Not a air compressor on/off switch malfunction.

It is strongly recommend that you keep the vehicle's engine running while using the air compressor to prevent discharge of your vehicle 's battery. Compressor performance is also enhanced when vehicle's engine running.

Tire inflation:

Important: before attaching air compressor's power cord to power source, check to make sure that the (red) to the positive terminal of the battery and the negative battery clamp (Black) to

the negative terminal of the battery.

Caution: your air compressor is moisture and dust resistant, the air compressor is equipped with a sand tray so that you can place the compressor on a soft sand while running the air compressor. Never expose compressor to water while running the compressor.

Technical Support

For technical support, call : 626-855-1700. You may also reach Broutech technical support at info@Broutech.com

BROUTECH limited warranty

BROUTECH warrants only to the original purchaser of this product from a Broutech authorized reseller or distributor that this product will be free from defects in material and workmanship under normal use and service for (1) one-year after date of purchase. Purchaser must present acceptable proof of original ownership (such as original receipt, warranty card registration, on-line registration, or other documentation Broutech deems acceptable) for the product. BROUTECH, at its option, shall repair or replace the defective unit covered by this warranty. In order to keep this limited warranty in effect, the product must have been handled and used as prescribed in the instructions accompanying this warranty. This limited warranty does not cover any damage due to accident, misuse, abuse or negligence. This limited warranty is non-transferable and does not apply to any purchaser who bought the product from a reseller or distributor not authorized by Broutech, including but not limited to purchases from internet auction sites. This warranty does not affect any other legal rights you may have by operation of law. Contact BROUTECH at 1-(855) 839-2666 for warranty service procedures.

DISCLAIMER OF WARRANTY EXCEPT FOR THE LIMITED WARRANTY PROVIDED HEREIN, TO THE EXTENT PERMITTED BY LAW, BROUTECH DISCLAIMS ALL WARRANTIES, EXPRESS OR IMPLIED, INCLUDING ALL WARRANTIES OF MERCHANTABILITY AND/OR FITNESS FOR A PARTICULAR PURPOSE. TO THE EXTENT THAT ANY IMPLIED WARRANTIES MAY NONETHELESS EXIST BY OPERATION OF LAW, ANY SUCH WARRANTIES ARE LIMITED TO THE DURATION OF THIS WARRANTY. SOME STATES/PROVINCES DO NOT ALLOW LIMITATIONS ON HOW LONG IMPLIED WARRANTY LASTS, SO THE ABOVE LIMITATIONS MAY NOT APPLY TO YOU. LIMITATION OF LIABILITY REPAIR OR REPLACEMENT OF THIS PRODUCT, AS PROVIDED HEREIN, IS YOUR EXCLUSIVE REMEDY. BROUTECH SHALL NOT BE LIABLE FOR ANY SPECIAL, INCIDENTAL OR CONSEQUENTIAL DAMAGES, INCLUDING, BUT NOT LIMITED TO, LOST REVENUES, LOST PROFITS, LOSS OF USE OF ANY SPECIAL, INCIDENTAL OR CONSEQUENTIAL DAMAGES, INCLUDING, BUT NOT LIMITED TO, LOST REVENUES, LOST PROFITS, LOSS OF USE OF SOFTWARE LOSS OR RECOVERY OF DATA, RENTAL OF REPLACEMENT EQUIPMENT, DOWNTIME, DAMAGE TO PROPERTY, AND THIRD-PARTY CLAIMS, ARISING OUT OF ANY THEORY OF RECOVERY, INCLUDING WARRANTY, CONTRACT, STATUTORY OR TORT. NOTWITHSTANDING THE TERM OF ANY LIMITED WARRANTY OR ANY WARRANTY IMPLIED BY LAW, OR IN THE EVENT THAT ANY LIMITED WARRANTY FAILS OF ITS ESSENTIAL PURPOSE, IN NO EVENT WILL BROUTECH'S ENTIRE LIABILITY EXCEED THE PURCHASE PRICE OF THIS PRODUCT. SOME STATES/PROVINCES DO NOT ALLOW THE EXCLUSION OR LIMITATION OF INCIDENTAL OR CONSEQUENTIAL DAMAGES, SO THE ABOVE LIMITATION OR EXCLUSION MAY NOT APPLY TO YOU. THIS WARRANTY GIVES YOU SPECIFIC LEGAL RIGHTS AND YOU MAY ALSO HAVE OTHER RIGHTS THAT VARY FROM STATE TO STATE AND PROVINCE TO PROVINCE.